



ARCHIMEDE

TUFTING MACHINE WITH 1 FILLING TOOL AND 2 DRILLS FOR THE PRODUCTION OF ALL KINDS OF BROOMS AND BRUSHES.

ARCHIMEDE makes versatility its main strength. The high degree of flexibility of filling and the variety of accessory equipment allows for the production of a wide range of items: flat brushes, round head brushes, cylinder brushes, discs, tank brushes, lag brushes and many special brushes of various shapes.

ARCHIMEDE is available with e-STROKE filling head (H version for larger fiber). The e-STROKE version allows to adjust the filling tool stroke maximizing production speed (RPM) based upon fiber length.



radial filling



upright filling



radial & uplift filling



lag/table brushes



special brushes



disc brushes



round head brushes



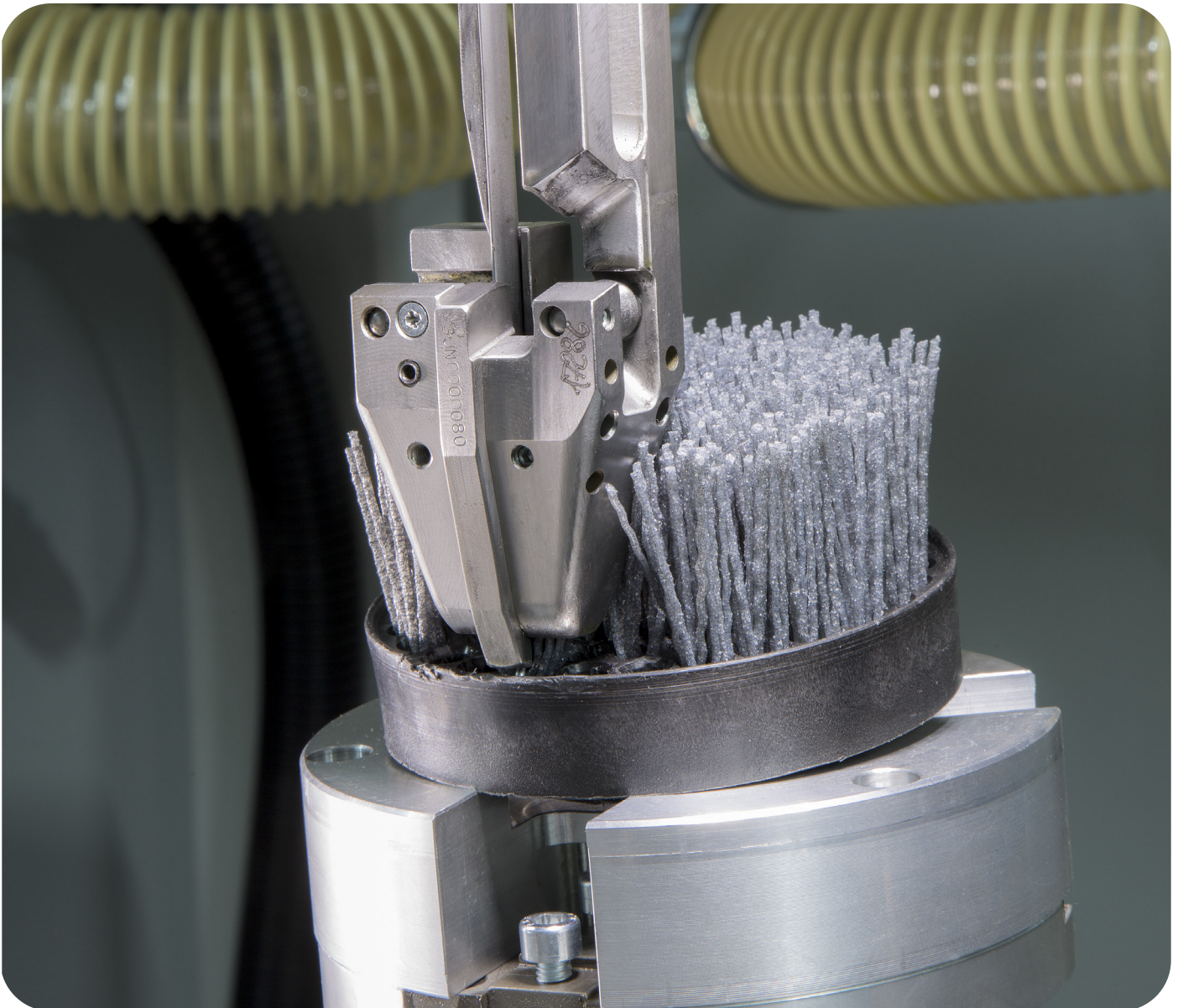
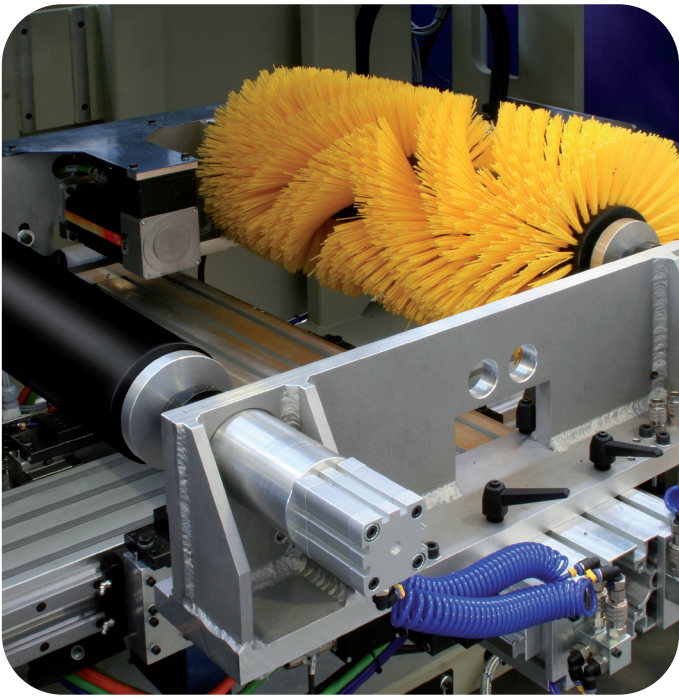
dish brushes



cylinder brushes

- ✓ Quick change-over time, best choice for short runs.
- ✓ 3-brush-clamping system for continuous operation.
- ✓ High efficiency: the e-STROKE filling head ensures the ideal set-up for different fiber lengths.

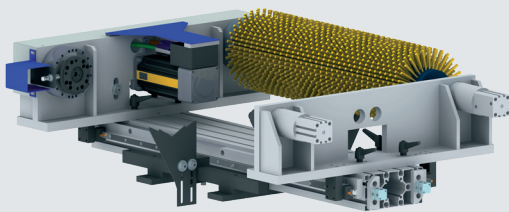
- ✓ 2-brush-clamping system for larger products.
- ✓ Fiber stock box for synthetic filament (up to 3 colors) as well as natural, metallic and grit fiber.
- ✓ Abrasive fiber washing system to extend life of the filling tool



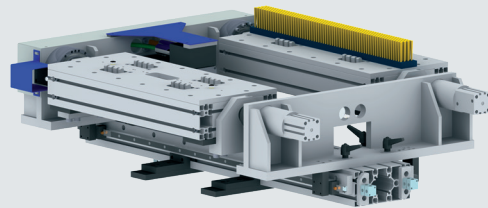
ARCHIMEDE

WIDE RANGE OF BRIDGES AVAILABLE. ARCHIMEDE can process most types of brushes. All the bridges are available with 2 clamps or 3 clamps. 2-brush-clamping systems are suitable for larger brushes: the machine runs in discontinuous cycle, where the greater distance between the clamps enables larger items to fit. 3-brush-clamping systems allow the machine to run in continuous cycle.

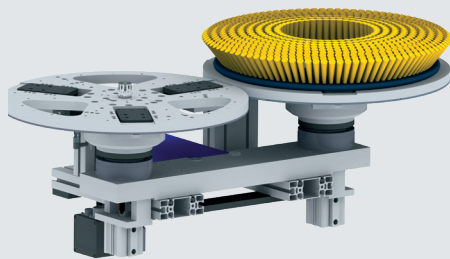
CYLINDER BRUSH BRIDGE



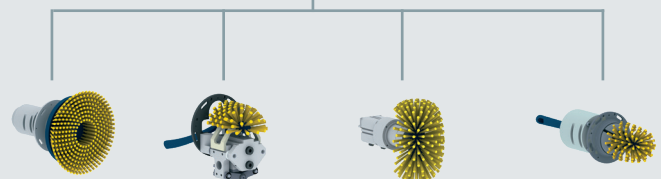
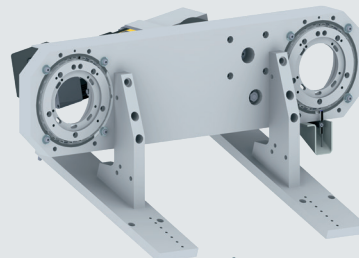
LAG BRUSH BRIDGE



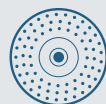
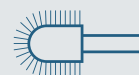
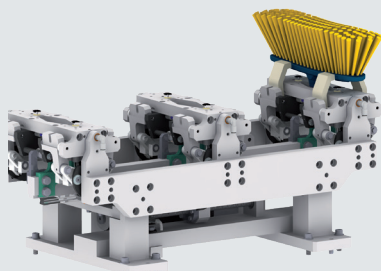
DISC BRUSH BRIDGE



BLD BRIDGE



RADIAL BRIDGE



CYLINDER BRUSHES

Maximum length (mm)	600
Maximum core diameter (mm)	300
Max. brush O.D. (mm)	450

DISC BRUSHES

Maximum diameter (mm)	610
Maximum flare angle (degrees)	45°

LAG BRUSHES

Maximum width (mm)	610
Maximum length (mm)	610

TECHNICAL DATA

Axes	5		
Filling tools	1		
Drills	2		
Filling head	Mechanical	e-STROKE	H version e-STROKE
Stroke (mm)	85	70 / 135	70 / 135
Speed (tufts/minute)	500	500 / 400	450 / 350
Maximum fiber length (mm)	300	270 / 400	270 / 400
Minimum fiber length (mm)	40	40	40
Maximum filling tool (mm)	7.5	7.5	7.5
Minimum filling tool (mm)	2.2	2.2	2.2
Power consumption (kW)	2.9		
Air consumption (nL/min)	170		
Weight (kg)	3300		
Dimensions (mm)	L - 2750	W - 2650	H - 2200

